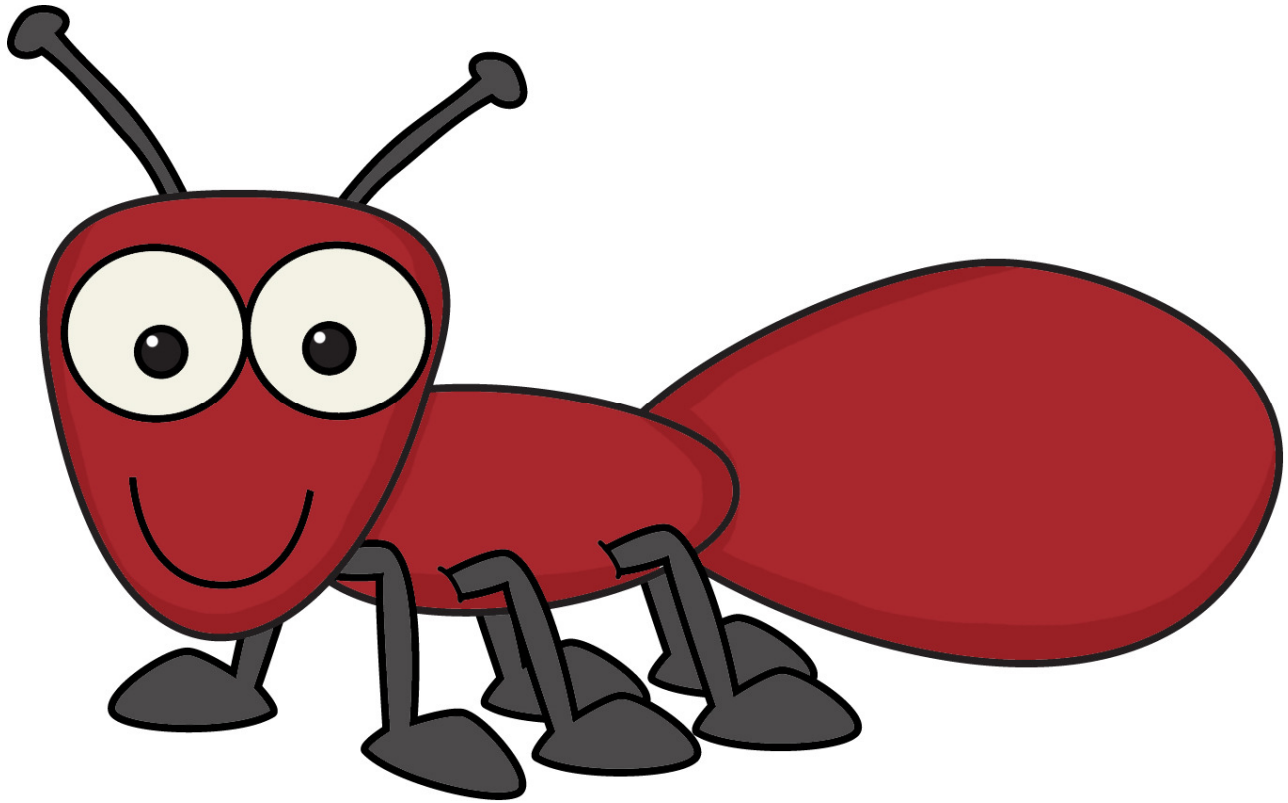


# label an insect



Directions: Have the students cut the words out and glue them pointing to the appropriate body part.

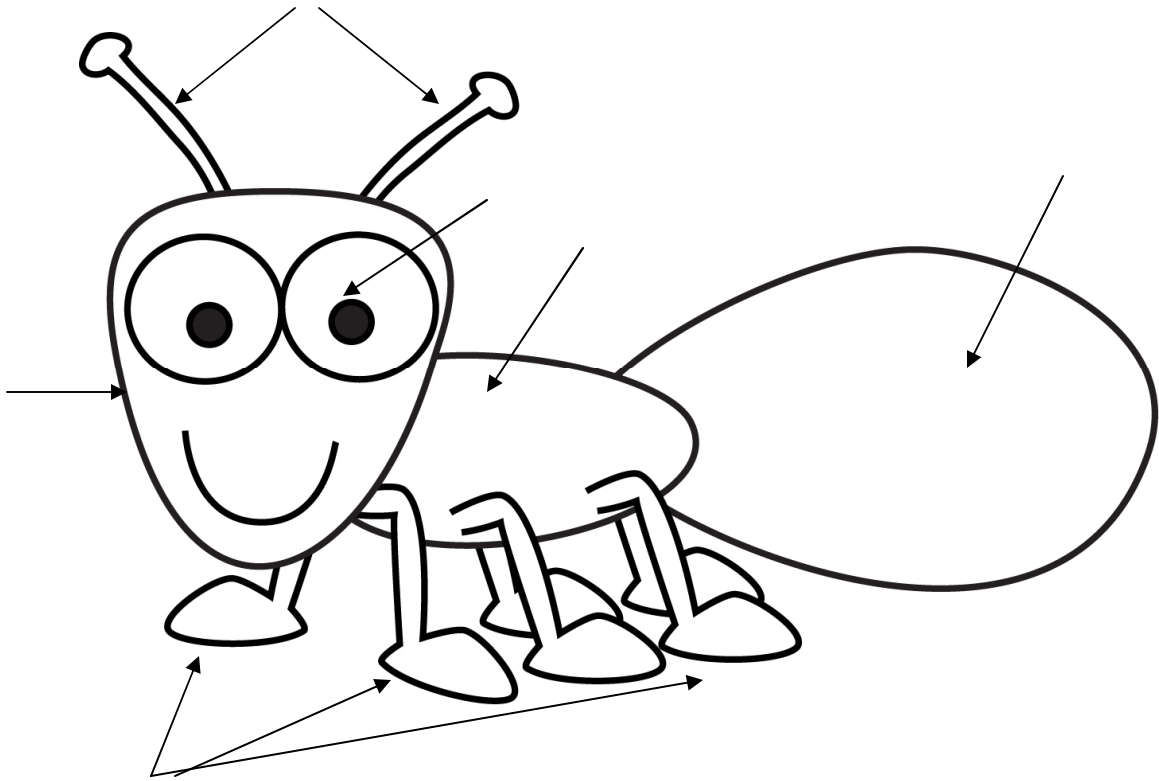
Thanks to:

Scrappin Doodles ([www.scrappindoodles.com](http://www.scrappindoodles.com)) for the clip art and Fonts for Peas ([www.kevinandamanda.com/fontsforpeas](http://www.kevinandamanda.com/fontsforpeas)) for the fonts.

Thanks for downloading this form!

Libby Tyler @ [www.firstgradearty.blogspot.com](http://www.firstgradearty.blogspot.com)

# label an insect



Head	Thorax	Abdomen	6 legs
2 Eyes	2 Antennas	Mouth	